

The Boston Cyclocross Association  
& The New England Championship Cyclocross Series Present:

# WAYLAND CYCLOCROSS RACE

## \$2000 Cash Prize list, Artist-created Trophies

Brought to you by:

**BOSTON  
CROSS**  
BOSTON CYCLOCROSS ASSOCIATION  
[www.bostoncross.com](http://www.bostoncross.com)

**2001/2002  
VERGE**

**New England Championship  
Cyclo-Cross Series**

[www.vergesport.com](http://www.vergesport.com)  
[www.necyclocross.com](http://www.necyclocross.com)



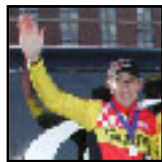
*IF rider Johns Huseby is just one of many professionals competing in the Verge NE Cyclocross Series*

**SAT. DECEMBER 1, 2001**  
**WAYLAND HIGH SCHOOL**  
**WAYLAND, MASS., USA**

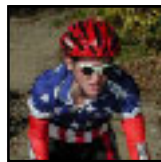
HELD UNDER USA CYCLING PERMIT



*Multi-National Champion  
Paul Curley*



*National Champion  
Mark McCormack*



*National Champion  
Alicia Genest*



*National Champion  
Tim Johnson*



*Bikereg.com's  
Adam Myerson*

Fees includes all insurance. USA Cycling license, ANSI/SNELL certified helmet, and well-functioning road, mountain (no bar ends), or cyclocross bike required to race. One day (\$5) and annual USA Cycling licenses available day of race. Registration opens at 9:00AM, closes 10 minutes before each race. USCF Category 1,2 and Pros should do the A race. Category 3 should do either A or B race. You are encouraged to race in more than one race as long as you are qualified for each race (example: Cat 4 master can do both "B" race and "Masters" race). Second race \$10.00. **\$5 day of race fee.** Make checks payable to "Boston Cyclocross Association", PO Box 1412, Somerville MA 02144 **Register Online at <http://www.bikereg.com>**

**Directions:**

Route 128/95, exit at Route 20 (Waltham/Weston). Take Route 20 West to intersection of Route 126 in Wayland center. Take left onto 126 South until next set of lights. Bear right through lights to remain on 126 South. The high school will be on your right. If you're taking Route 2 from the east, hop on 128 South and follow these directions. Route 2 from west, take 126 South from 2 through Wayland center (over Rt 20) and follow same as above.

From I-90, Boston and points west: Route 90/Mass Pike, exit at Route 30 (Exit 13, bear left). Proceed on Route 30 East/North for 2 miles to Route 27. Turn left onto Route 27 North. At first set of lights (3 miles), turn left onto Route 126 South. After 1 mile, the high school will be on your right. Check Mapquest.com if you're not sure!

Race	Time	Entry	Prizes/Places
"C" - Beginner Men, Women, Juniors 0-14	10AM	\$12.00	Trophies/3
Masters 35+	11AM	\$15.00	\$250/5 +Trophies/3
Juniors 15-18	11AM	\$15.00	\$250/5 +Trophies/3
Elite Women	12PM	\$15.00	\$500/8 +Trophies/3
Elite Men	1:15PM	\$20.00	\$1000/15 +Trophies/3
"B" Men	2:30PM	\$15.00	Trophies/3